



My Mizzou: Clear the Air

Peers Against Secondhand Smoke
University of Missouri-Columbia

University of Missouri Statement of Values



- Respect
- Responsibility
- Discovery
- Excellence

These statements are mere words until we integrate them as values in our individual lives and reflect them in our institutional policies and practices

– Curators of the University of Missouri

(<http://www.missouri.edu/about/values.php>)

Guiding Principles for Campus Tobacco Policy Decisionmaking:

- ❑ Should be guided by research and evidenced – based practices
 - ❑ Should facilitate help for persons who want to quit smoking
 - ❑ Should be easy to understand so it will be easy to implement, follow, and enforce
-

Examining the Evidence

- **FIX THIS SLide**
- The scientific evidence indicates that **there is no risk-free level of exposure to secondhand smoke.**

- **Eliminating smoking in indoor spaces fully protects nonsmokers from exposure to secondhand smoke.** Separating smokers from nonsmokers, cleaning the air, and ventilating buildings cannot eliminate exposures of nonsmokers to secondhand smoke.

The Health Consequences of Involuntary Exposure to Tobacco Smoke

A Report of the Surgeon General



Department of Health and Human Services

Our Current Policies

Campus:

Business Policy and Procedure: Chapter 1,
Section 1:160

Residence Halls:

MU Tiger Guide

“Living in the Residence Halls” p. 30 – 31

Expert Advice

- American College Health Association (ACHA) & Healthy Campus 2010
 - American Cancer Society
 - Smoke-free Campus
 - Americans for Nonsmokers Rights
-

Comparison of MU Tobacco Policies to Other Universities

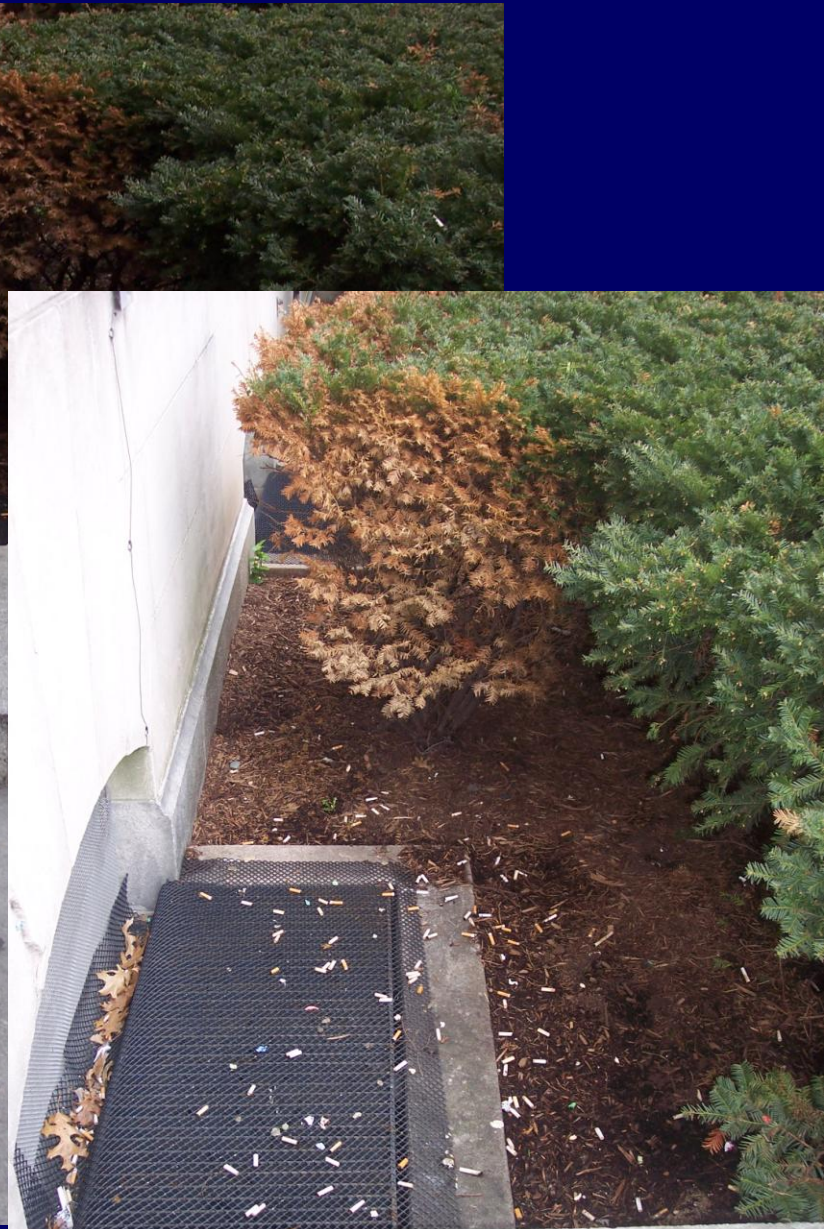
- ❑ Big XII Schools
- ❑ Other State Funded Universities in Missouri
- ❑ Other Peer Universities
 - ❑ Land Grant Universities
 - ❑ Carnegie Research University/Very High Output
 - ❑ Association of American Universities

Core Issues – Improve this slide

(Add picture – cig butts near doors?)

- Indoor Areas
 - Outdoor areas
 - Campus vehicles
-







PASS Tobacco Use Policy

Recommendation:

- No indoor tobacco use in any campus building.
 - No smoking in university owned vehicles
 - Exceptions: Laboratory research; Theatrical productions
 - Smoking permitted only in designated areas of parking lots and parking garages
 - Provide cessation opportunities for students, faculty and staff.
-

Support for Our Recommendations

- Some colleges and universities have policies that make their campuses smoke-free, that is no smoking in all campus buildings or outside on campus grounds. Would you support a policy like this at University of Missouri?

	<u>% Yes</u>
Students:	61%
Faculty & Staff:	53%

Support for Our Recommendations

Students	Faculty & Staff	Most Preferred Policy Statement
73.8%	76.5%	No smoking anyplace indoors and no smoking in specified outdoor areas on campus property

References: CASE Spring 2006 Email Survey

Support for Our Recommendations

■ Smoking At Mizzou:

□ Students:

- 92% of students do not smoke daily
- 48% of students initiated smoking while at MU
- 64% of students who smoke indicate they would like to quit
 - MU Wellness Survey. Fall 2006

□ Faculty & Staff:

- 85.7% of faculty and staff do not smoke daily
 - CASE Tobacco Opinions Email Survey, Spring 2006



Rationale for Parking Areas as Smoking Areas

Parking lots and garages are:

- Strategically placed throughout campus. Easily accessible from all worksites and residence halls
 - Well lit with routine security monitoring 24 hours per day; Access to ER telephones
 - Cleaned daily; Will centralize tobacco waste; Easier to clean up off of concrete
 - Garages provide shelter during bad weather
-

Delete ???



MU Campus buildings
and grounds are
Smoke-free



Smoking permitted in areas
of parking lots and garages



We're Tobacco-free
Inside and
Out
FOR YOUR HEALTH



University of Missouri
HEALTH CARE

Other Suggestions to Improve Implementation (Change order??)

- Disseminate new policy to all students, faculty, and staff.
 - New signage with an education campaign regarding the new policy.
 - Provide cigarette receptacles at each designated smoking area.
 - Use proven enforcement strategies.
 - Continue to prohibit sale, promotion and advertising of tobacco products on campus.
-

Questions?

